

Hayden

i'm to blame

As Transcribed by Michael Jordan

i'm to blame

Originally by **Hayden**

Transcribed by **Michael Jordan**

Moderato

The piano introduction consists of two staves. The right hand plays a series of chords in 3/4 time, while the left hand plays a rhythmic pattern of eighth notes.

8

I con - si - dered your let - ter.

8

The piano accompaniment for the first vocal line, featuring chords in the right hand and a rhythmic pattern in the left hand.

13

I un - der - stood your ques - tions

13

The piano accompaniment for the second vocal line, including a key signature change to 3/4 time.

18

Vocal line for measures 18-22. The melody consists of eighth and quarter notes with some rests. The lyrics are: "I'm was-ting a - way I've gone a - stray Take me a -"

I'm was-ting a - way I've gone a - stray Take me a -

18

Piano accompaniment for measures 18-22. The right hand features chords and single notes, while the left hand has a steady eighth-note bass line.

23

Vocal line for measures 23-27. The melody continues with eighth and quarter notes. The lyrics are: "way I know what you'll say I'm to blame, Did - n't"

way I know what you'll say I'm to blame, Did - n't

23

Piano accompaniment for measures 23-27. The right hand has chords and single notes, and the left hand continues with a steady eighth-note bass line.

28

Vocal line for measures 28-32. The melody consists of quarter and eighth notes. The lyrics are: "want change. Things can't stay The same way."

want change. Things can't stay The same way.

28

Piano accompaniment for measures 28-32. The right hand has chords and single notes, and the left hand continues with a steady eighth-note bass line.

33

Co - me get me, I'm rea - dy. My -

33

38

mind's changed, will you take me?

38

43

43

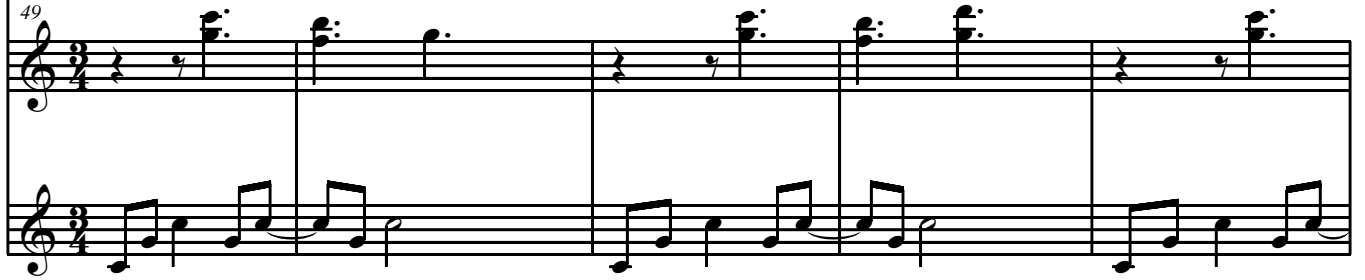
49



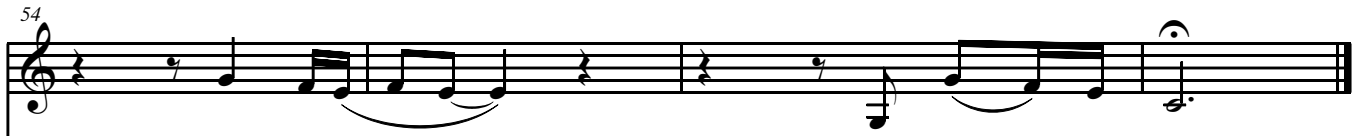
I'm wast-ing a - wa - ay

I've gone a - stra - ay.

49



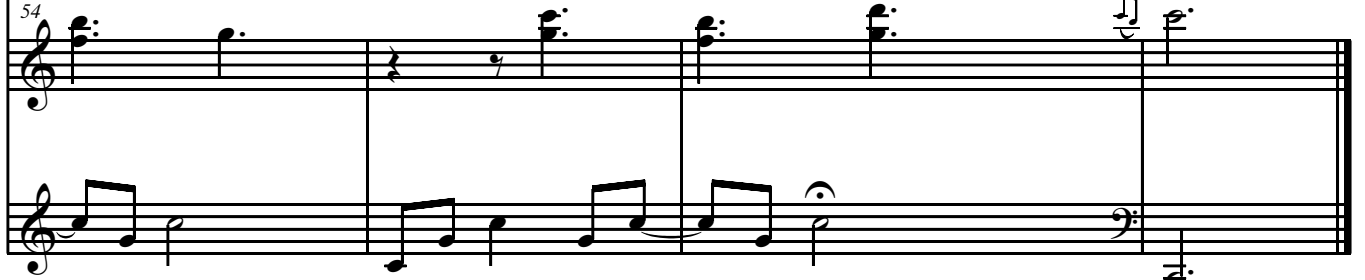
54



Take me a - wa - ay

know what you'll see

54



8vb